

# how to fit and care for your Splendor Skylight blinds.

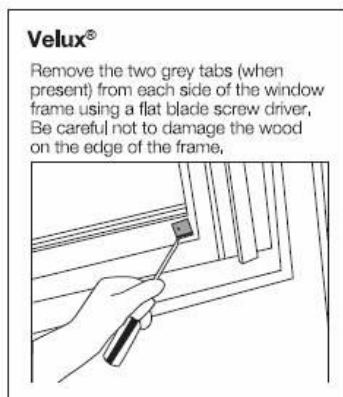
IN ORDER TO KEEP YOUR BLIND SAFE IN TRANSIT, THE BRACKETS ARE PACKED SEPARATELY AND ENCLOSED AT ONE END OF THE BOX. PLEASE CHECK THOROUGHLY BEFORE DISCARDING ANY PACKAGING.

## aftercare

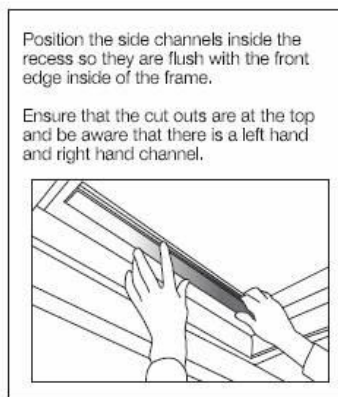
To ensure your Roller blind stays looking its best for many years to come, follow the straightforward operating and cleaning instructions below:

### Operating Instructions

- Use the tab to raise and lower the blind to your desired height



step one

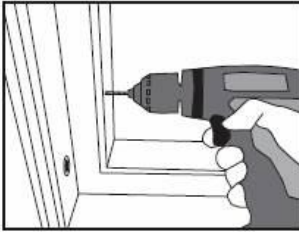


step two



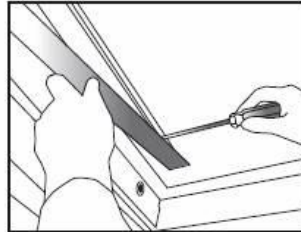
step three

Remove the side channels and drill a small pilot hole (2mm) for the fixing screws.



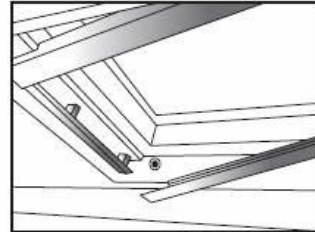
step four

Position a fixing screw through the bottom slot in each side channel and lightly tighten.



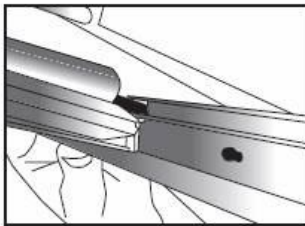
step five

Once both channels are lightly tightened, carefully tilt them forward enough to allow the assembled roller cassette to be positioned.



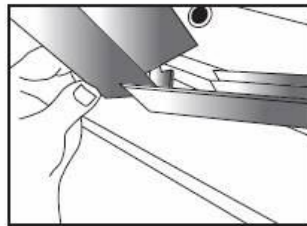
step six

Position the cassette so that the protruding black lugs locate into the narrow track on each side channel.



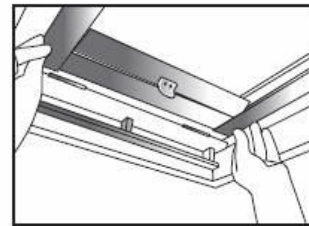
step seven

At the same time, ensure that the brackets are engaged into the cut out at the top of each side channel.



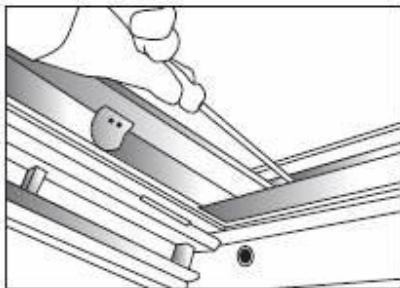
step eight

Push the assembled cassette and the side channels forward so they are flush with the front inside edge of the frame.



step nine

Position the fixing screws through the top of each side channel and secure. Tighten the screws at the bottom of each side channel.



step ten

Operate the blind by tilting the finger tab forward to release the blind. (Keep hold of the tab). To stop the blind tilt the tab back to it's original position.



step eleven